



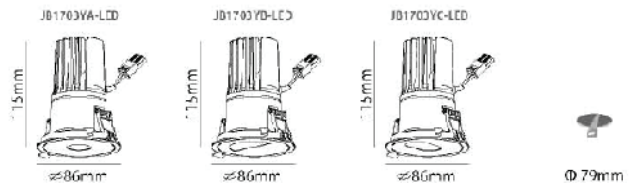
**greenlux**  
cost reduction LED lighting

# Vega Series Pinhole Fixed LED Downlight

High CRI 90 Architectural Design  
80% lumen maintenance at 50,000 hours



LED 10W	cd/Klm	Beam Angle: 16.94°	
60°	500	1m 2499 lx	0.30 m
	1000	2m 624.8 lx	0.60 m
	1500	3m 277.7 lx	0.89 m
	2000	4m 156.2 lx	1.19 m
	2500	5m 99.96 lx	1.49 m
30°		High Illuminance	Diameter



- High CRI >90 or >95 (options)
- Anti-glare, Low UGR <19
- Fixed Angle and Gimbal option available
- Dimmable and Non-Dimmable option available
- COB LED chips with high luminous flux
- Applications include restaurants, offices, shops, schools, hotels & households. Also widely used for public areas such as stairways, lobby, receptions & corridors.

<b>Beam angle</b>	15° / 25° / 38° / 50°
<b>CRI</b>	>90
<b>Power Factor</b>	>0.95
<b>Chipset</b>	COB
<b>Driver</b>	Class II
<b>Dimmable (option)</b>	Triac / 0-10V / DALI

## Specifications

<b>Colour Range</b>	2700-5000k
<b>Power Consumption</b>	10W / 15W / 18W
<b>Lumen</b>	750 / 1125 / 1350lm
<b>Input Voltage</b>	AC 100-240V

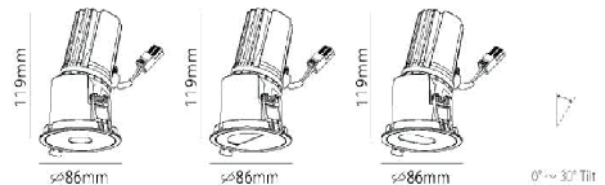
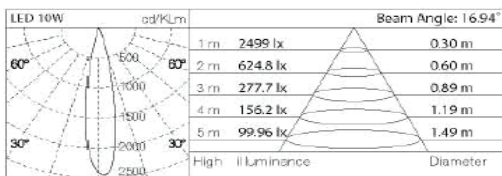
## Dimensions & Materials

<b>Product Dimensions (mm)</b>	Ø86*115	<b>Cutout</b>	Ø80
<b>Housing Material</b>	Aluminum Housing		



# Vega Series Pinhole Gimbal LED Downlight

High CRI 90 Architectural Design  
80% lumen maintenance at 50,000 hours



- High CRI >90 or >95 (options)
- Anti-glare, Low UGR <19
- 0° ~ 30° tilt
- Fixed Angle and Gimbal option available
- Dimmable and Non-Dimmable option available
- COB LED chips with high luminous flux
- Applications include restaurants, offices, shops, schools, hotels & households. Also widely used for public areas such as stairways, lobby, receptions & corridors.

**Beam angle** 15° / 25° / 38° / 50°

**CRI** >90

**Power Factor** >0.95

**Chipset** COB

**Driver** Class II

**Dimmable (option)** Triac / 0-10V / DALI

## Specifications

**Colour Range** 2700-5000k

**Power Consumption** 10W / 15W / 18W

**Lumen** 750 / 1125 / 1350lm

**Input Voltage** AC 100-240V

## Dimensions & Materials

**Product Dimensions (mm)** Ø86\*119 **Cutout** Ø80

**Housing Material** Aluminum Housing





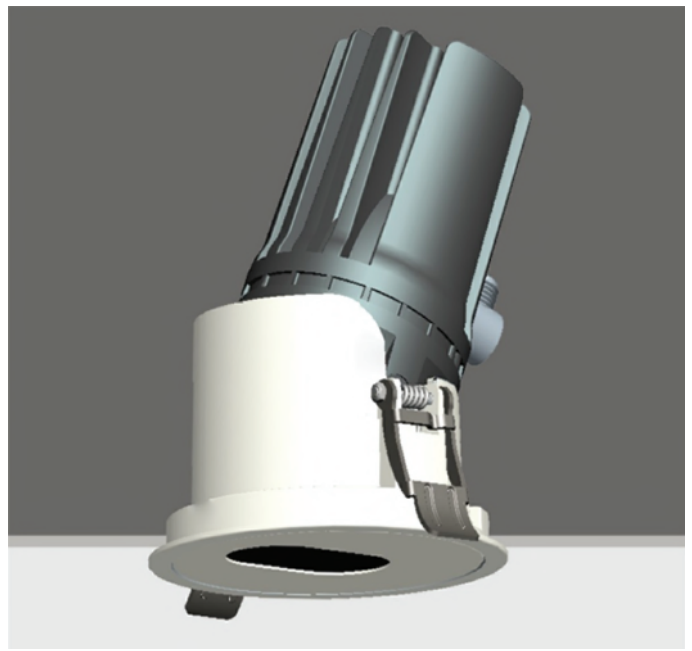
**greenlux**  
cost reduction LED lighting

# Vega Series Pinhole LED Downlight

## Fixed Angle



## Gimbal



Model#	Dimensions (mm)	Cutout (mm)	Beam Angle	CCT (k)	Lumens	Wattage	LED	Dimmer (option)
<b>Pinhole Fixed</b>								
GJVEG-10W-PF	Ø86*115	Ø80	15°/25°38°/50°	2700k 3000k 4000k 5000k	750	10W	COB	Triac 0-10V DALI
GJVEG-15W-PF	Ø86*115	Ø80			1125	15W		
GJVEG-18W-PF	Ø86*115	Ø80			1350	18W		
<b>Pinhole Gimbal</b>								
GJVEG-10W-PG	Ø86*119	Ø80			750	10W		
GJVEG-15W-PG	Ø86*119	Ø80			1125	15W		
GJVEG-18W-PG	Ø86*119	Ø80			1350	18W		