

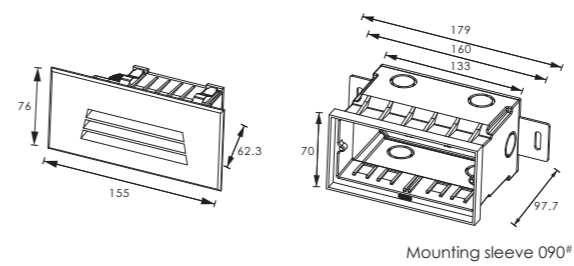
LED Colour Temperature

- 2000K
- 3000K
- 6000K

Optics

- N/A

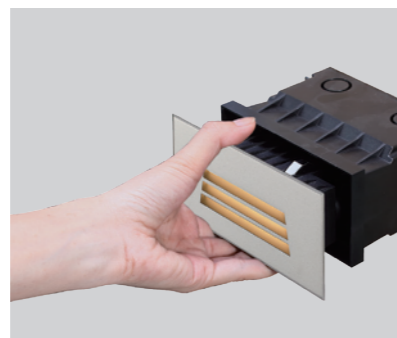
Outer Dimensions



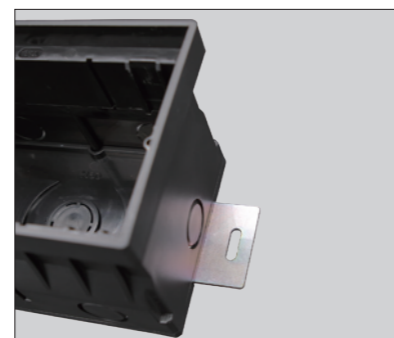
Material specifications

| | |
|-----------------------|---|
| Housing | 12" Die-casting grey powder coated aluminum. T=60-80um Adhesion of ISO class 1/ASTM class 4B |
| Front cover | 12" Die-casting aluminum RAL7037 powder coated T=60-80um. Adhesion of ISO class 1/ASTM class 4B; |
| LED | SMD3030 type LED |
| Cable gland | IP67 PG9 PA66 |
| Gasket | Molding shaped silicone seal |
| LED Driver | Constant Voltage Input, Constant Current Output |
| Operating temperature | -20°C~40°C |
| Power Cable | H05RN-F 2X1.0mm ² L=0.5m (low voltage) H05RN-F 3X1.0mm ² L=0.5m (high voltage) |
| Mounting sleeve | ABS Ø90° |
| Dimmable Support | Triac PWM 1-10V Dalı |

| Front Cover Color Option | |
|------------------------------|--|
| — Basic | |
| Sanded Dark Grey KAP 7037 | |
| — Secondary | |
| Silver Grey KAP 9022 | |
| Sanded Black RAL9005 | |



The clips have been specially modified and upgraded to have a stronger structure in order to make up the absence of the screw fixing.



There are two metal support plates on the bottom of the sleeve. It is used for fixing and preventing the mounting sleeve shifting while filling the concrete. These will simply installer and electrician while they are recessing the sleeves.

| Item | Light source | Input voltage(V) | Typical operating current(mA) | Typical consumption(W) | Typical luminance(lm) | IK rate |
|-------------------|--------------|---------------------|-------------------------------------|---------------------------------------|----------------------------------|---------|
| GKD1CB1834 | 18x0.3W | 24V DC 120 / 240 | 24V = 235 120V = 97 240V = 54 | 24V = 5.5 120V = 6.8 240V = 6.9 | Cool white =38 Warm white =34 | 09 |

