



Diffused Beam
Recessed LED Wall Light
Stainless steel front cover with Matte Surface



GKD1FD3634

GKD1FC3634

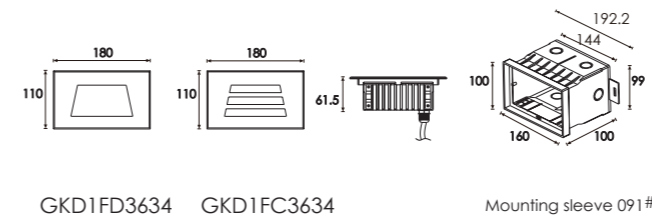
LED Colour Temperature

Optics

- 2000K
- 3000K
- 6000K

- N/A

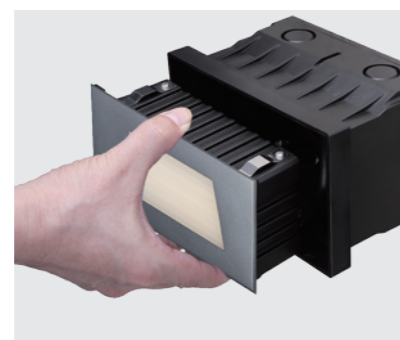
Outer Dimensions



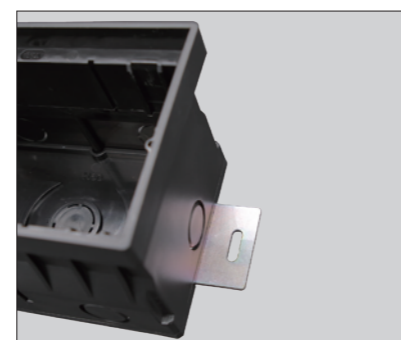
Material specifications

Housing	12# Die-casting grey powder coated aluminum, T=60-80um Adhesion of ISO class 1/ASTM class 4B
Front cover	Hard chromeplated Stainless steel 316#
LED	SMD3030 type LED
Cable gland	IP67 PG-9 PA66
Gasket	Molding shaped silicone seal
LED Driver	Constant Voltage Input, Constant Current Output
Operating temperature	-20°C~40°C
Power Cable	H05RN-F 2X1.0mm ² L=0.5m (low voltage) H05RN-F 3X1.0mm ² L=0.5m (high voltage)
Mounting sleeve	ABS 091#
Dimmable Support	Triac PWM 1-10V DalI

Item	Light source	Input voltage(V)	Typical operating current(mA)	Typical consumption(W)	Typical luminance(lm)	IK rate
GKD1FD3634	36x0.1W	24V DC 120/240	24V =235 120V=100 240V=55	24V =5.5 120V=6.7 240V=6.6	Cool white=180 Warm white=166	09
GKD1FC3634	36x0.1W	24V DC 120/240	24V =235 120V=99 240V=55	24V =5.5 120V=6.7 240V=6.5	Cool white=180 Warm white=160	09



The clips have been specially modified and upgraded to have a stronger structure in order to make up the absence of the screw fixing.



There are two metal support plates on the bottom of the sleeve. It is used for fixing and preventing the mounting sleeve shifting while filling the concrete. These will simply installer and electrician while they are recessing the sleeves.

