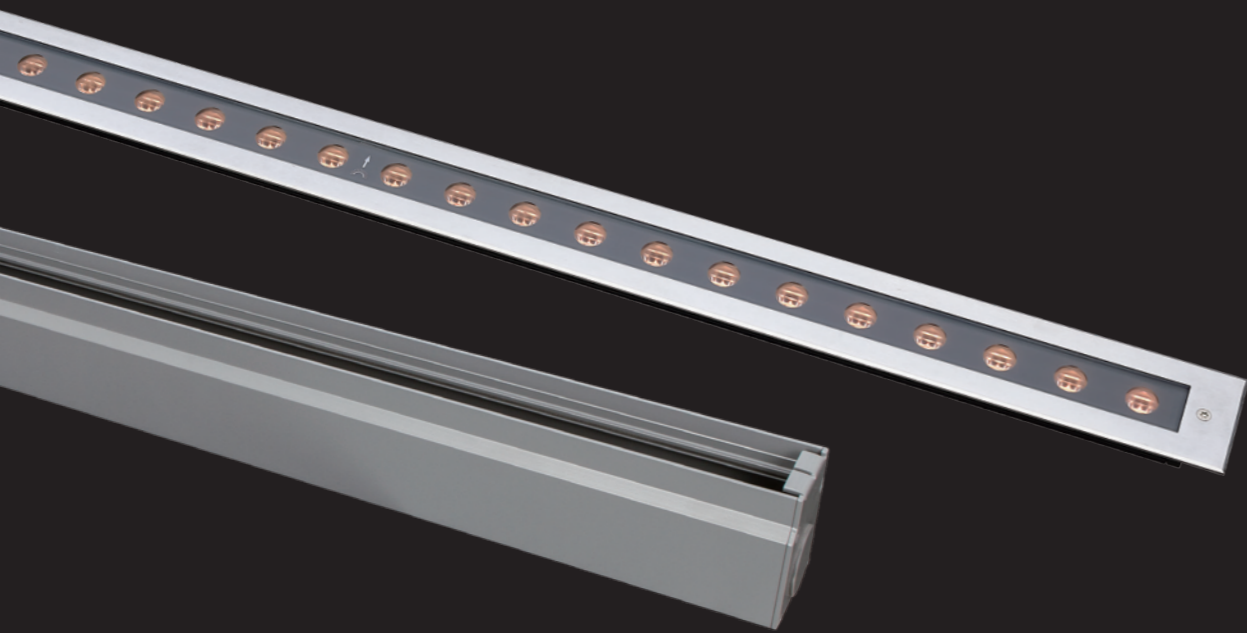
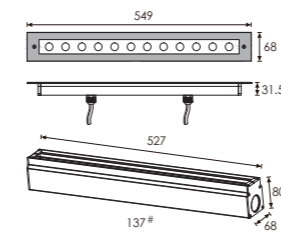


Linear Asymmetrical

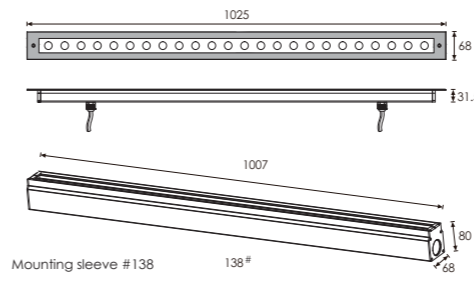
High Luminance Output Recessed LED inground light



Outer Dimensions Unit:mm



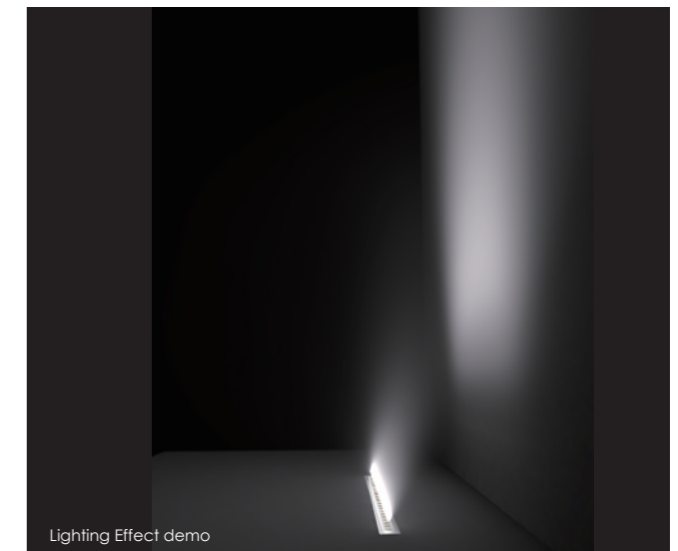
Mounting sleeve 137# GKC2RLB1257



Mounting sleeve #138 GKC2RLB2457

Material specifications

Housing	Extruded aluminum, powder coated
Front cover	Hard chromeplated stainless steel SUS 316L
Light Window	Tempered frosted step glass.T=6mm
Lens	Optical lens.efficiency≥85%
Cable gland	IP68 PG-9 PA66
Gasket	Glass and housing are silicone sealed
LED	OSRAM LED
Operating temperature	-20°C~40°C
Power Cable	H05RN-F 2X1.0mm² L=0.5m(low voltage) H05RN-F 3X1.0mm² L=0.5m(high voltage)
Mounting sleeve	Powder Coated Aluminum 137# 138#
Dimmable Support	Triac PWM 1-10V Dali



LED Colour Temperature

- 2000K
- 4000K
- 6000K

Optics



C8

L01_45° F023YH
35°

C8



45°
35°



Item	Light source	Lens	Length L=(mm)	The manufacturer selected lens degree(°)θ1/2	Input voltage(V)	Typical operating current(mA)	Typical consumption(W)	Typical luminance(lm)	IK rate
GKC2RLB1257	12×1.5W Single color	C8	549mm	45° 35°	24V DC 120/240	2 4 V = 910 120V = 143 240V = 79	2 4 V = 22.0 120V = 17.0 240V = 17.5	Cool white =1108 Warm white =1020	07
GKC2RLB2457	24×1.5W Single color	C8	1025mm	45° 35°	24V DC 120/240	2 4 V = 1823 120V = 312 240V = 146	2 4 V = 43.7 120V = 36.0 240V = 33.6	Cool white =2472 Warm white =2114	07

