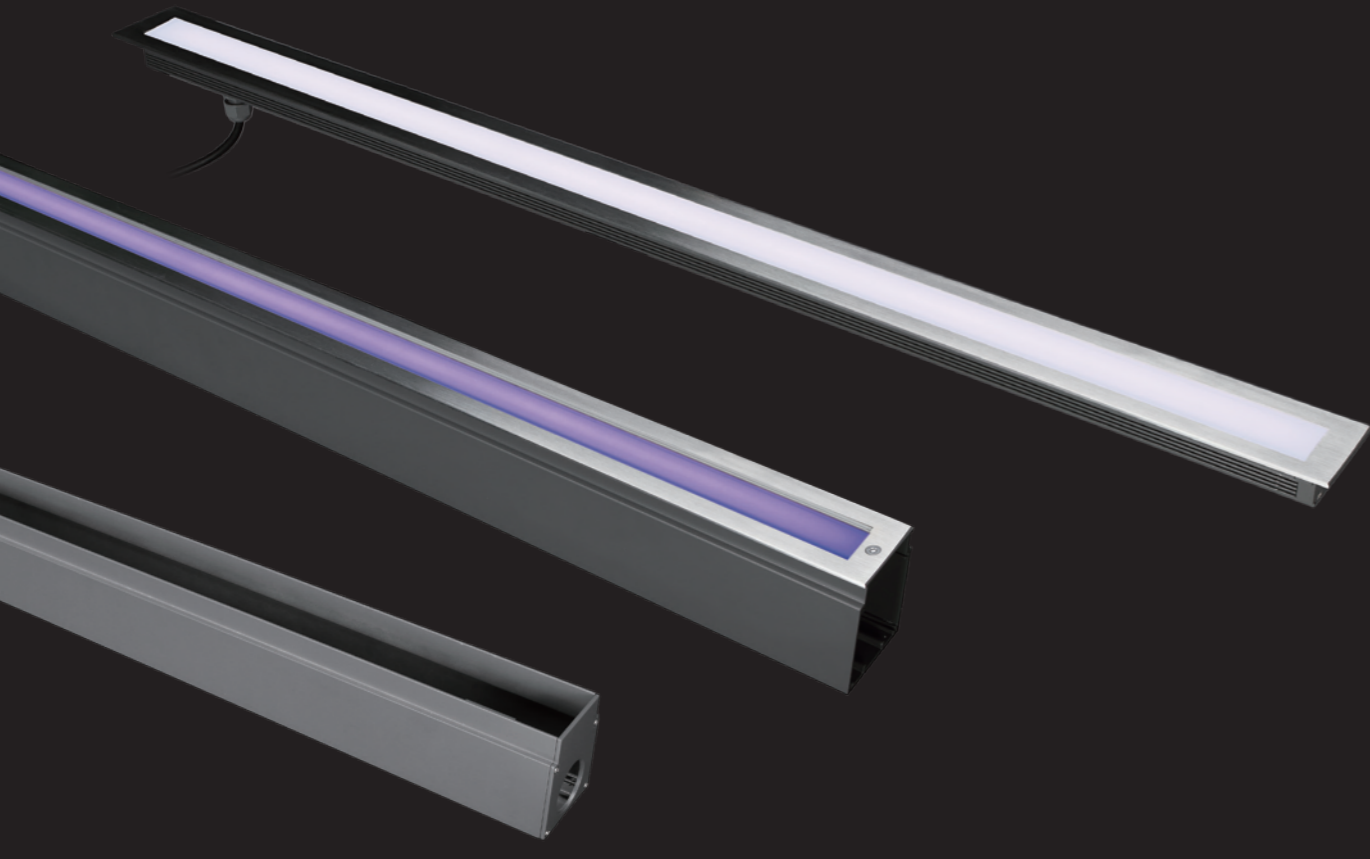
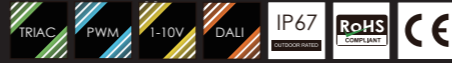
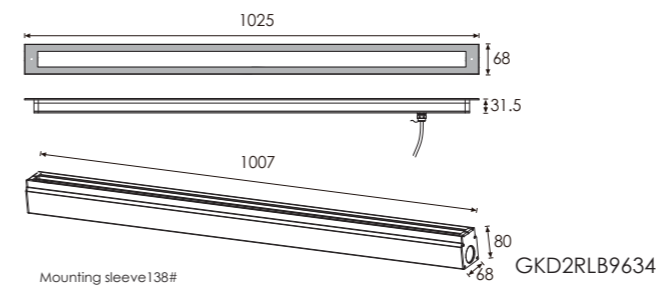
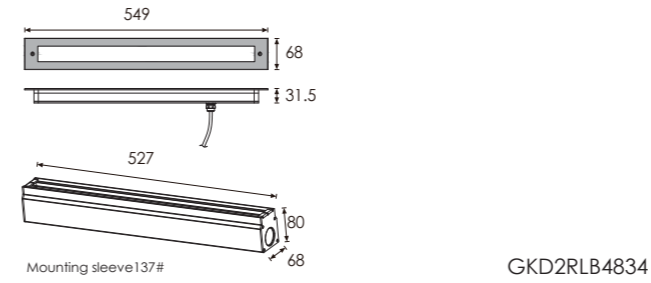


Linear Soft Beam

Recessed LED Inground light

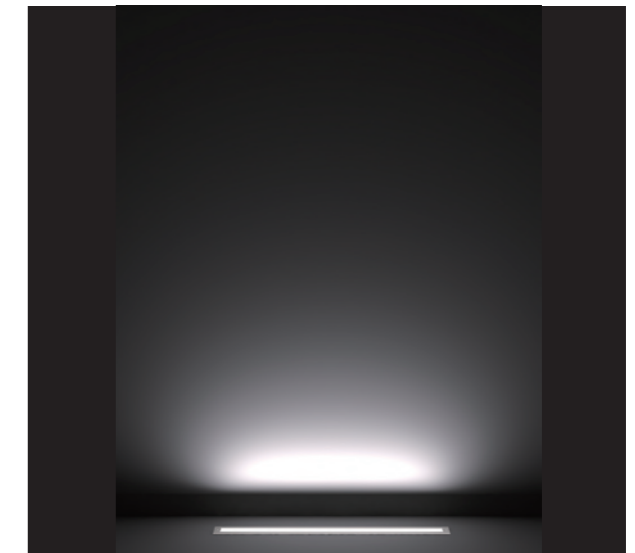


Outer Dimensions Unit:mm



Material specifications

Housing	Extruded aluminum, powder coated
Front cover	Hard chrome-plated stainless steel SUS 316L
Light Window	Tempered frosted step glass.T=6mm
LED	NICHIA LED 3030@0.5W
Cable gland	IP68 PG-9 PA66
Operating temperature	-20°C~40°C
Power Cable	H05RN-F 2X1.0mm ² L=0.5m(low voltage) H05RN-F 3X1.0mm ² L=0.5m(high voltage)
Mounting sleeve	Powder Coated Aluminum 137# 138#
Dimmable Support	Triac PWM 1-10V Dali



Lighting Effect demo

LED Colour Temperature

- 3000K
- 4000K
- 6000K

Optics

- N/A

Item	Light source	Length L=(mm)	The manufacturer selected lens degree(°)θ1/2	Input voltage(V)	Typical operating current(mA)	Typical consumption(W)	Typical luminance(lm)	IK rate
GKD2RLB4834	48X0.3W NICHIA	549	120°	24V DC 120/240	2.4 V = 555 120V = 106 240V = 60	2.4 V = 13.2 120V = 12.5 240V = 13.0	Cool white =300 Warm white =274	07
GKD2RLB9634	96X0.3W NICHIA	1025	120°	24V DC 120/240	2.4 V = 1108 120V = 212 240V = 107	2.4 V = 26.5 120V = 24.0 240V = 24.5	Cool white =602 Warm white =545	07

